

Cathedral Road

CARDIFF, CF11 9LP

£1,350 PER CALENDAR MONTH

**Hern &
Crabtree**



Cathedral Road

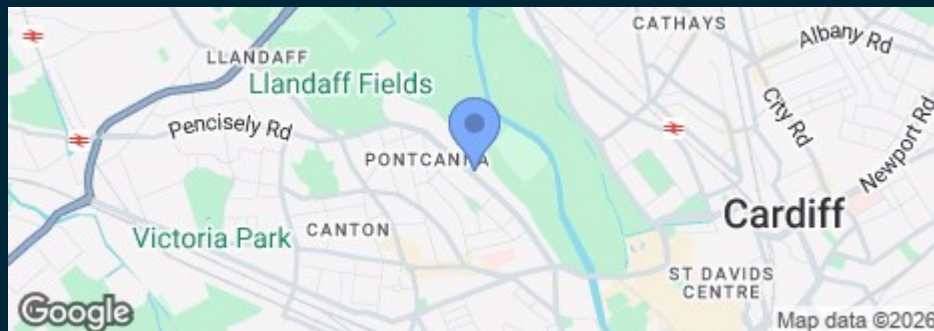
Lovely one bedroom first floor apartment in Pontcanna!

The open plan lounge/dining/kitchen features a fitted breakfast bar and is the perfect place to entertain guests or simply relax with friends. A double bedroom provides plenty of storage space and access to a modern shower room.

Pontcanna is home to beautiful parks, such as Bute Park which runs alongside the river, providing plenty of outdoor activities for its residents. It has a vibrant atmosphere, with a mix of independent shops, cafes, restaurants and pubs. Pontcanna Fields is also nearby which provides excellent sports facilities, including football pitches and tennis courts.

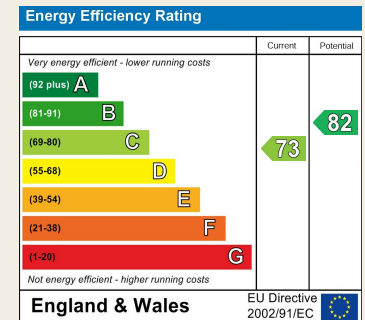
Available from May 2026. £1350PCM. Unfurnished. EPC rating TBC. Council Band E

A holding fee of £150 will be payable to secure the property. This will be deducted from the final balance of the first month rent payable upon moving into the property subject to a successful application. Hern & Crabtree Ltd reserves the right to retain this payment should the applicant have provided false or misleading information at the time of application.

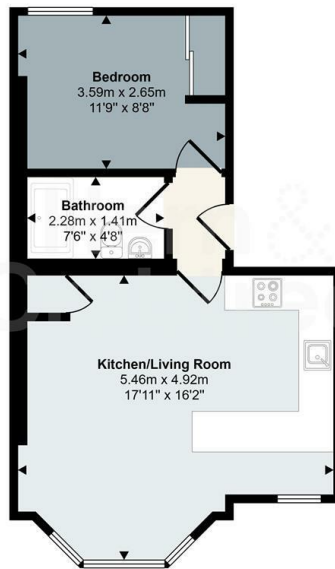




Good old-fashioned service with a modern way of thinking.



Approx Gross Internal Area
40 sq m / 428 sq ft



Floorplan

This floorplan is only for illustrative purposes and is not to scale. Measurements of rooms, doors, windows, and any items are approximate and no responsibility is taken for any error, omission or mis-statement. Icons of items such as bathroom suites are representations only and may not look like the real items. Made with Made Snappy 360.